

House-Gallery in Encino, California, October 2014
Ileana Costea's residence
IC ART – presenting Jerry W. McDaniel's art
www.ic-art-gallery.com



Ileana Costea in front of her residence, Encino/Los Angeles California



View from the terrace at sunset, San Fernando Valley and St. Gabriel Mountains



View during the day towards San Fernando Valley from the terrace



The new entry door designed by us to fit the modern interior – Ileana Costea



Welcome to our IC ART Gallery in Encino presenting Jerry W. McDaniel's art



Entry hall with one of the 15 large circle paintings, balls by McDaniel, and glass table with painting



Glass table modified to “take changeable paintings” – under the stairs in entry hall; Sports Watercolor



Entry Hall with Chihuly-style chandelier



Glass chandelier by artist Seth Park (<http://www.sethparksglass.com>) We contributed to the design of our chandelier by visiting the artist's studio near the Los Angeles Airport, selecting the size, the shape, the type of glass elements, the colors (red, orange and yellow) and the proportion of the colors...



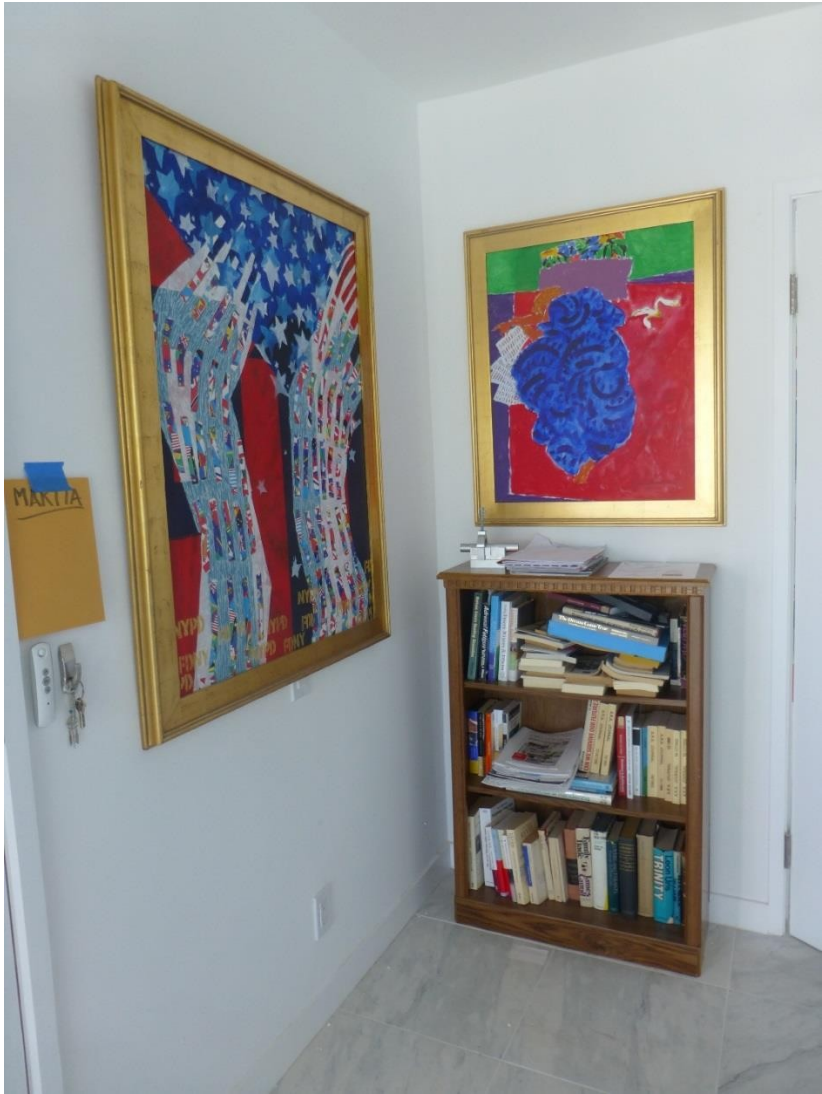
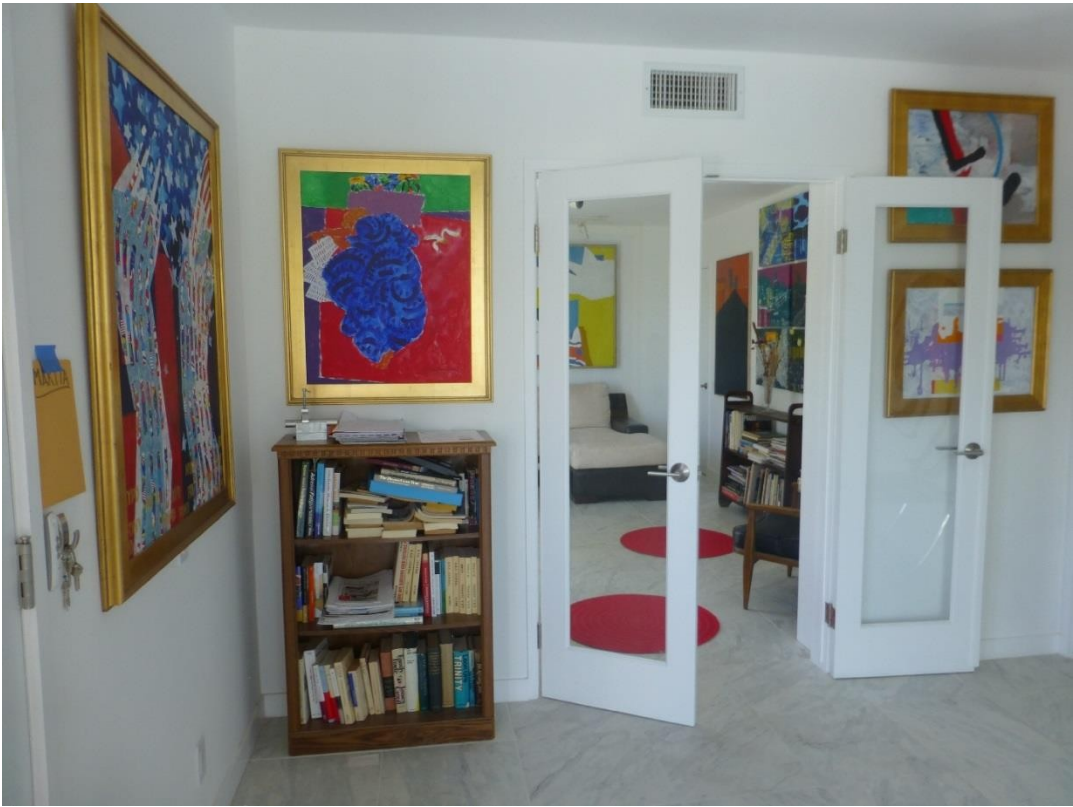
We found my chandelier in Bentley Square Garden in London, December 2014. Well there it also has some blue elements ... and it is a sphere...



This is the Chihully lamp I fell in love with some years ago.

It is a huge yellow glass sculpture by Chihuly one can see in the beautiful museum-like art gallery Imago in Palm Springs ... You sell your house and with a ½ of the money you get you buy this lamp ...

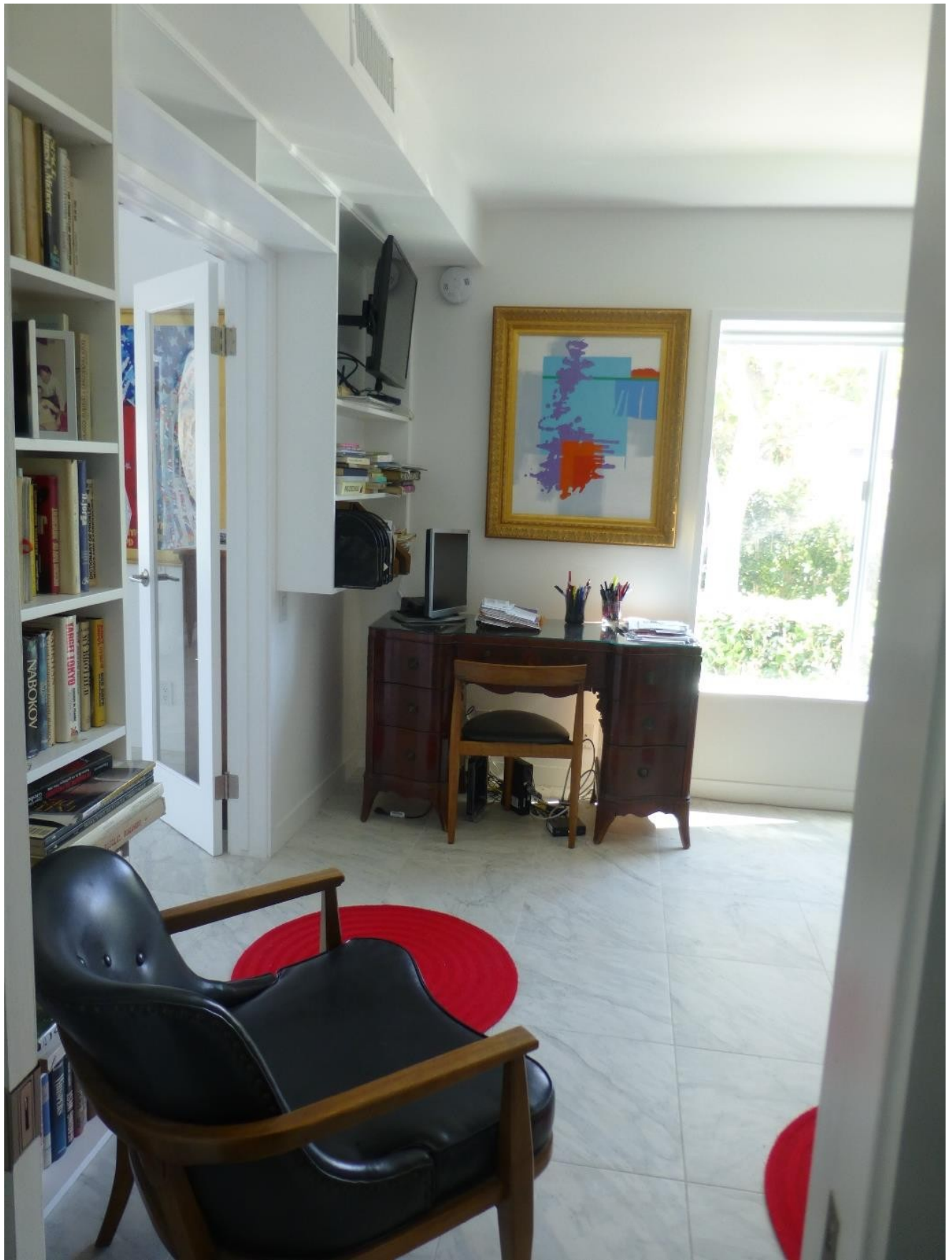
This gave me the idea for my chandelier. I love my Seth Park lamp.



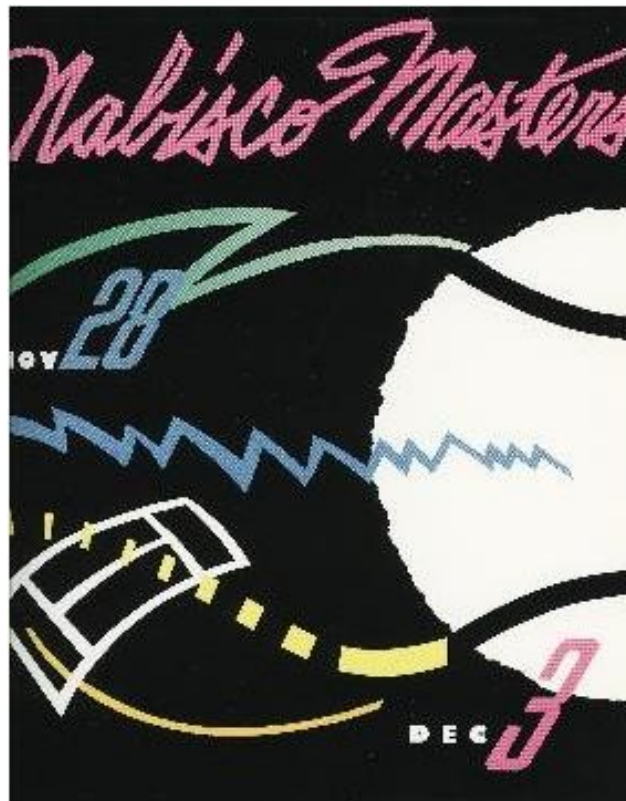


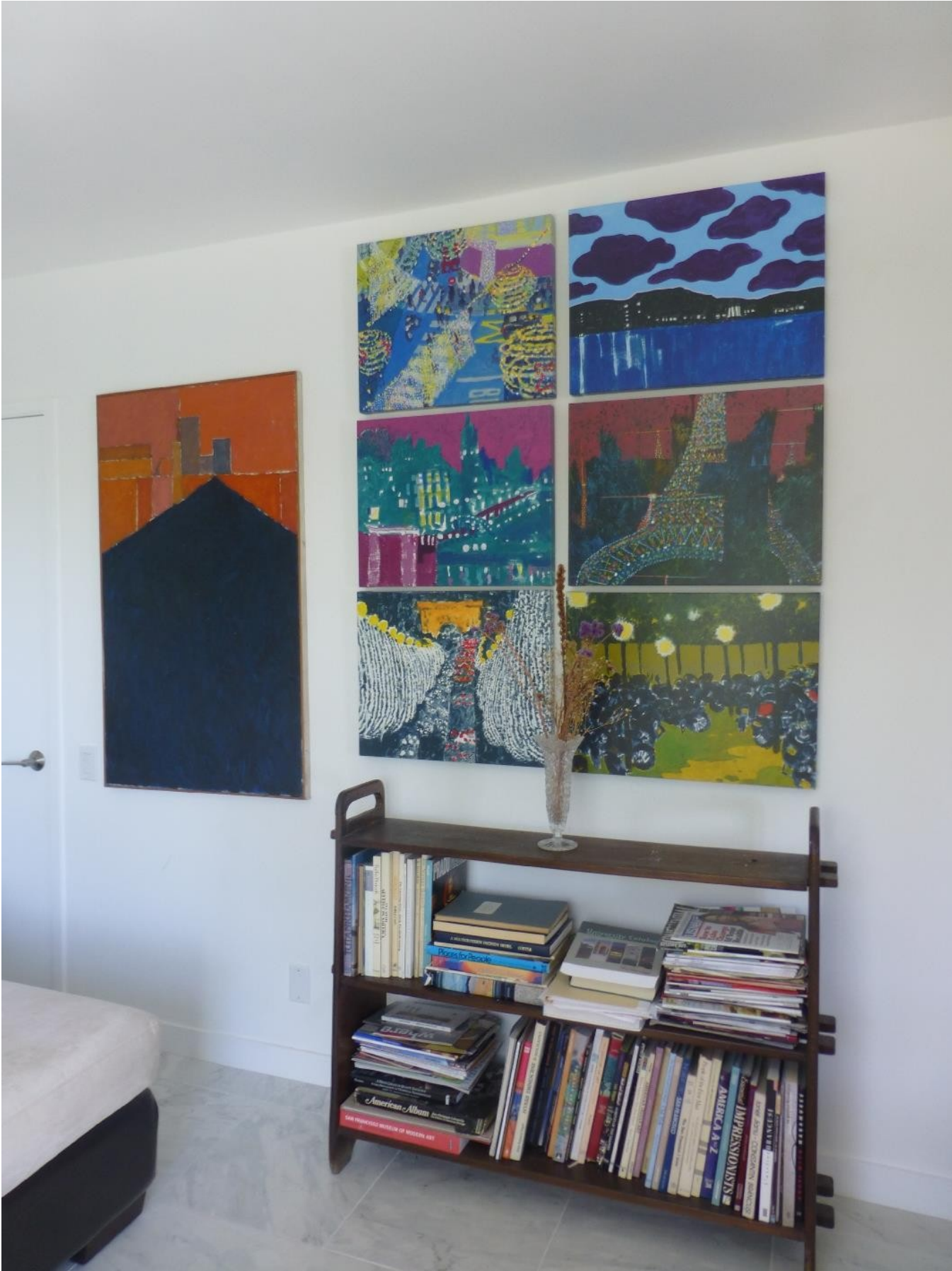


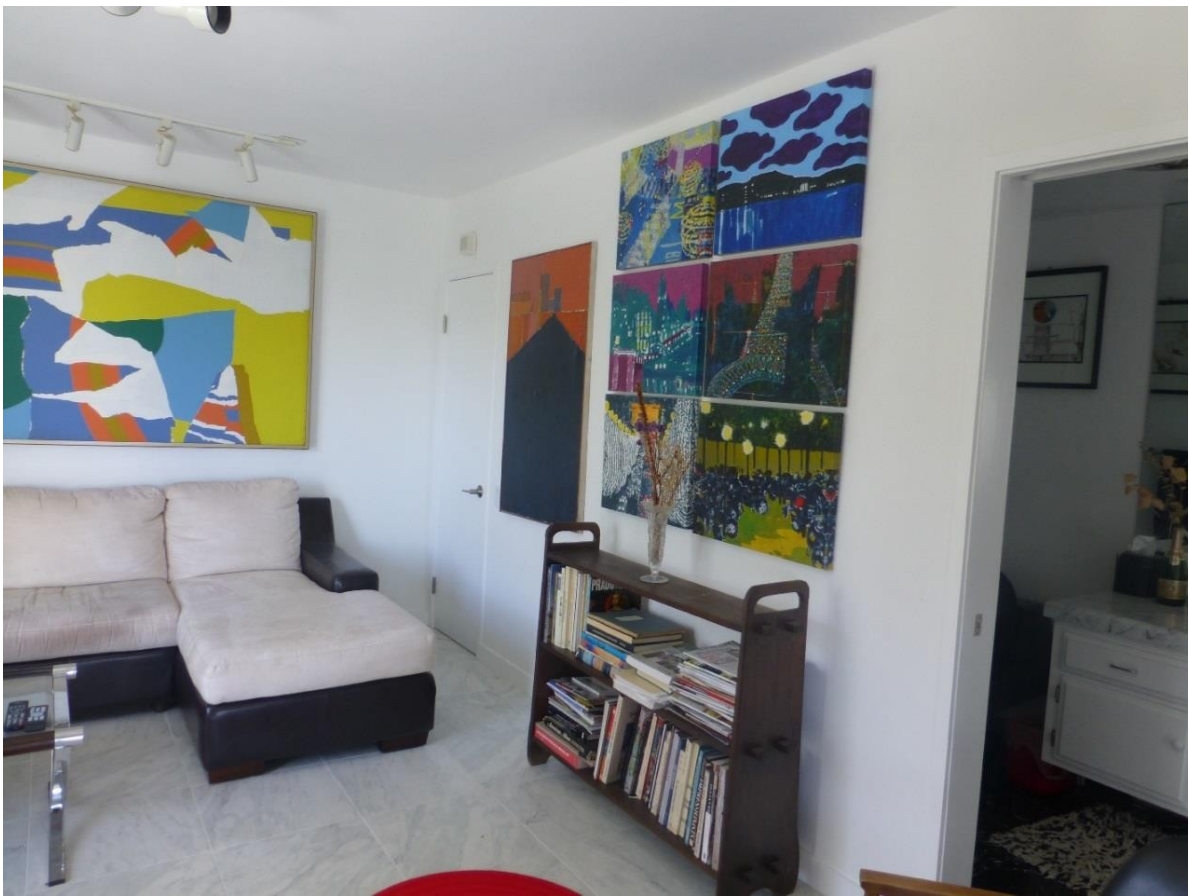
The downstairs guest room by the bathroom. Corner with old desk.





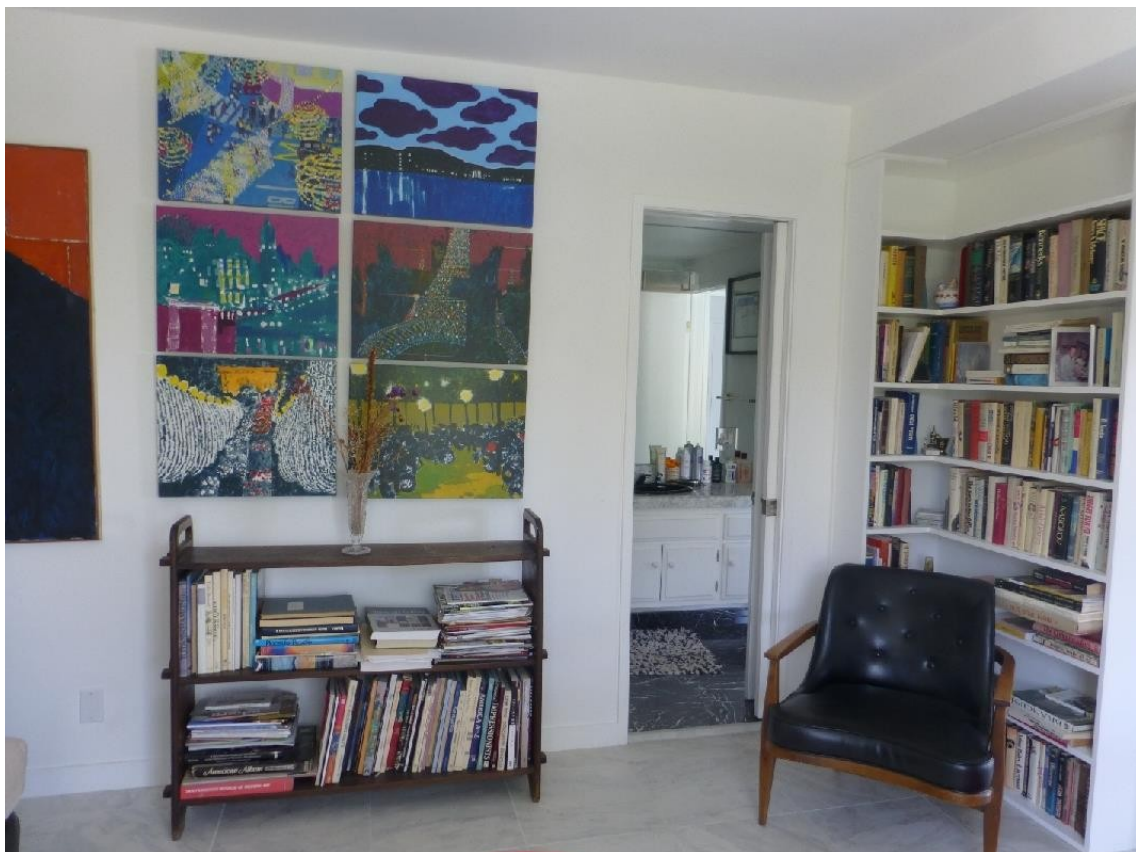








It represents a big building shadow in New York, on 3rd avenue at Cooper Union famous art and architecture school. Oil with charcol on canvas. 1959



The 6 paintings of the European Nightscapes (<https://www.youtube.com/watch?v=hn1tuxTfst0>) on the wall towards the bathroom in the guest room, and the new bookshelf on the wall towards the entry hall.



“What IF?” series; created for the Modernism week of Palm Springs

To show what if in one modernist interior one would put a painting by Jerry W. McDaniel.

Reproduction of an acrylic painting in a pencil sketch of a modernist interior

The entire “What If?” series decorates the downstairs bathroom.

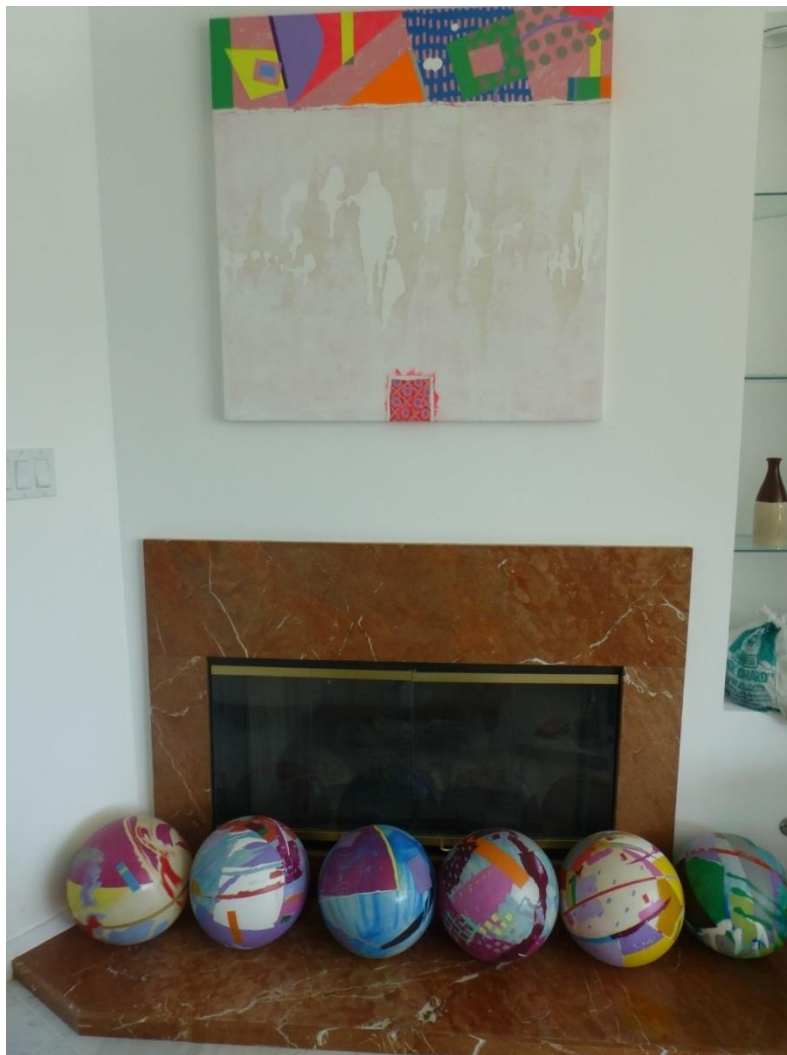




The living room with sectional couches in white leather by a Canadian designer.

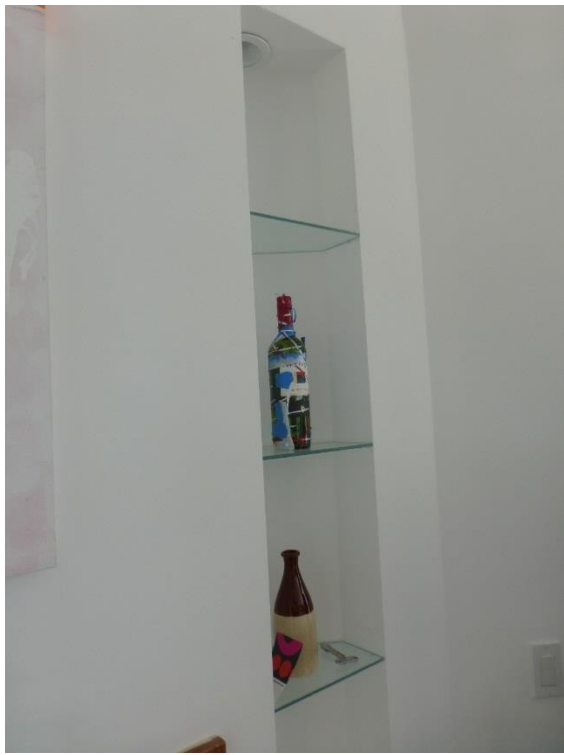


A little table or an arm support can be attached to the couch...



Fireplace with balls; above the "This is your brain" painting









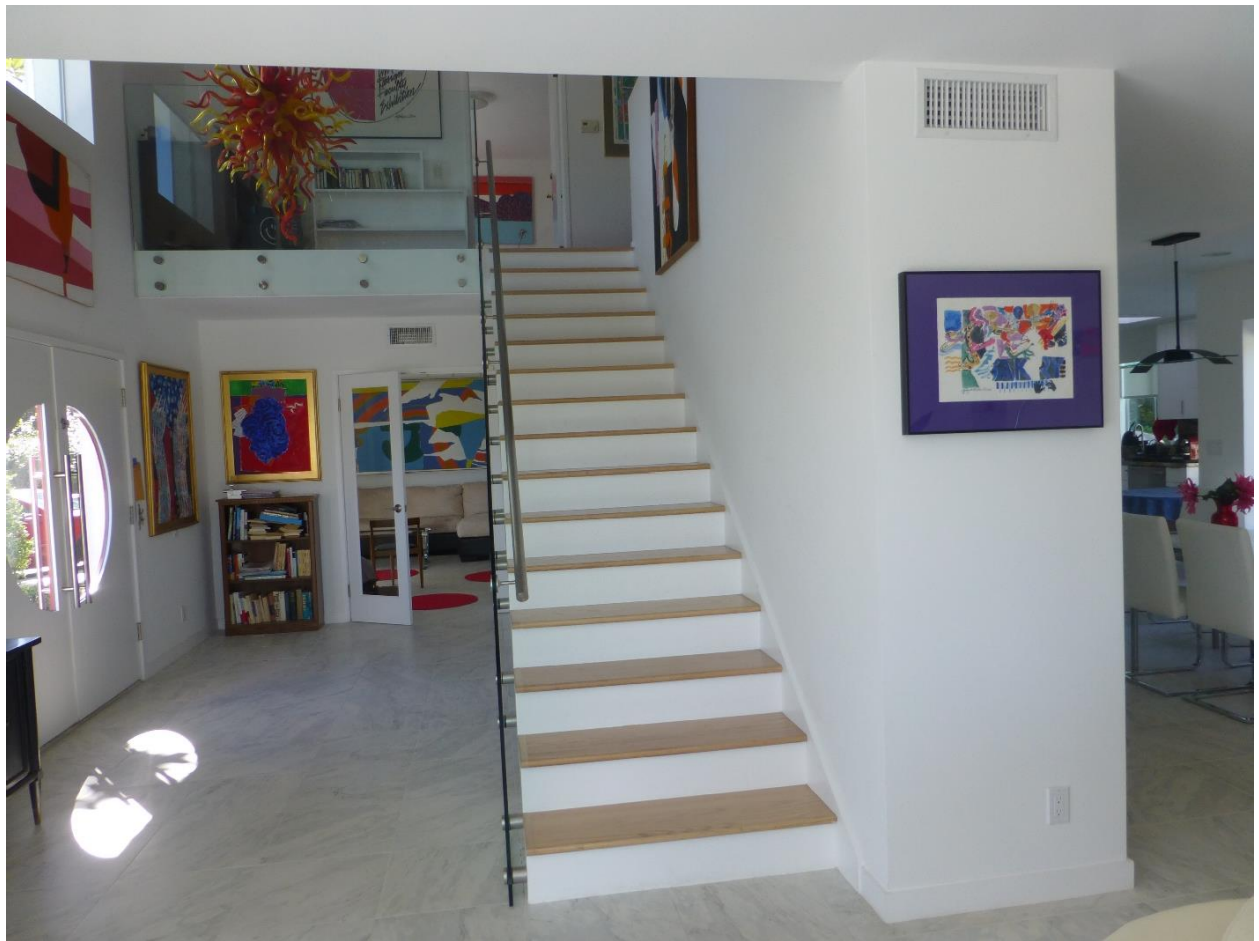
Coffee table we modified so that it has a glass on top to be able to place paintings under it. Two original water colors, reproductions of Romanian poet Blaga-inspired paintings, and one of the "Diane von Furstenberg" series circles



View towards the backyard with the swimming pool



Theda Bara painting (<https://www.youtube.com/watch?v=Rm542gst3rE>), ball, and circles in entry hall towards the living room, on the wall towards the street façade.



Entry hall; view from living room with Jazz Bakery painting – acrylic on paper



LA Jazz Bakery No More

© Jerry W. McDaniel' 2009



View towards the dining room.

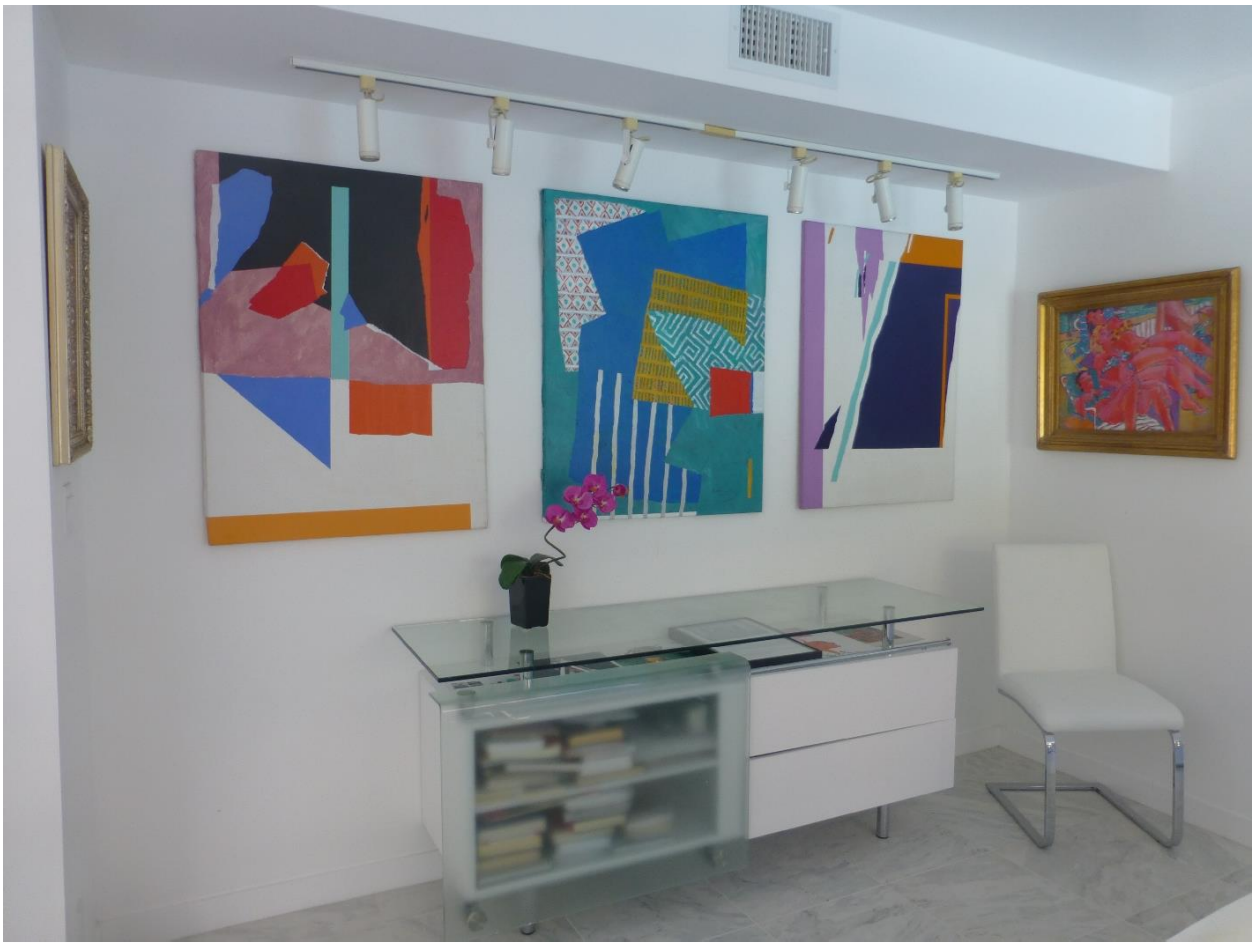


View towards the dining room with glass table, Los Angeles is burning painting, and modified little glass table and balls.



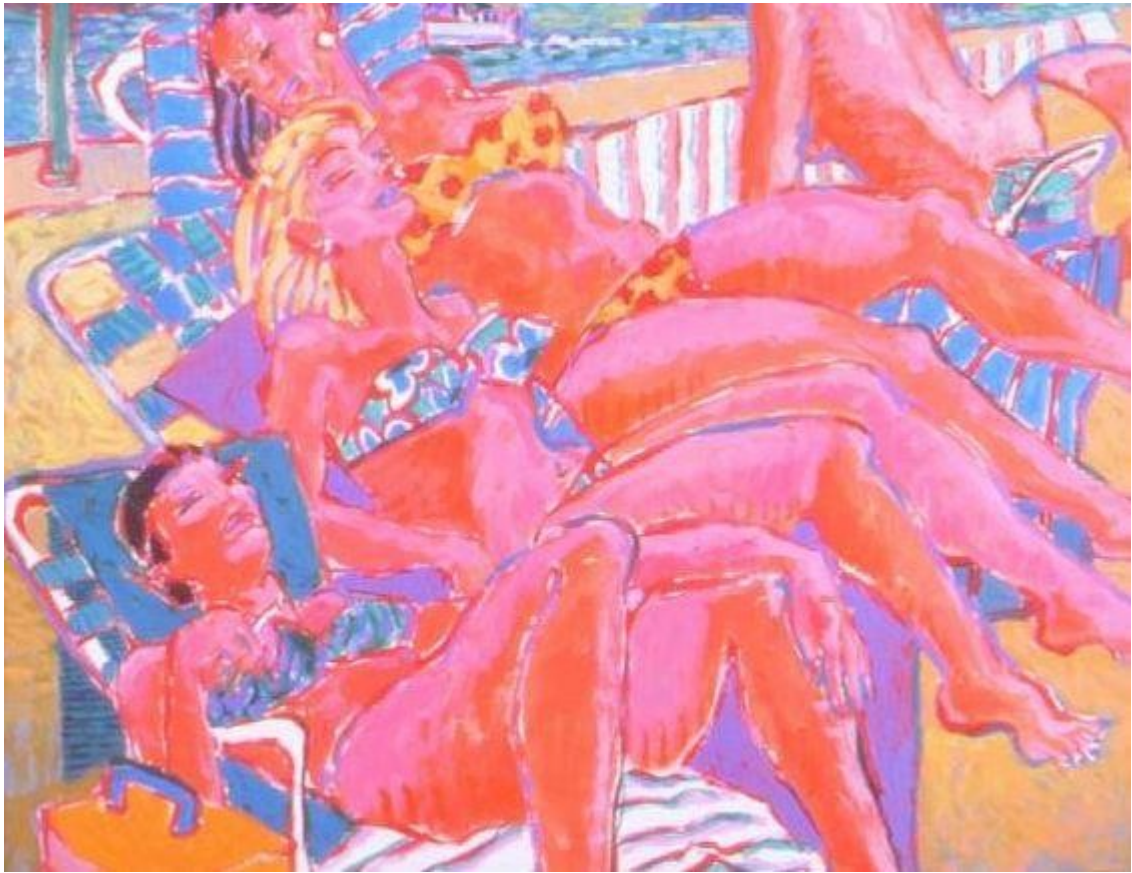


Little glass table near the "LA is burning" painting



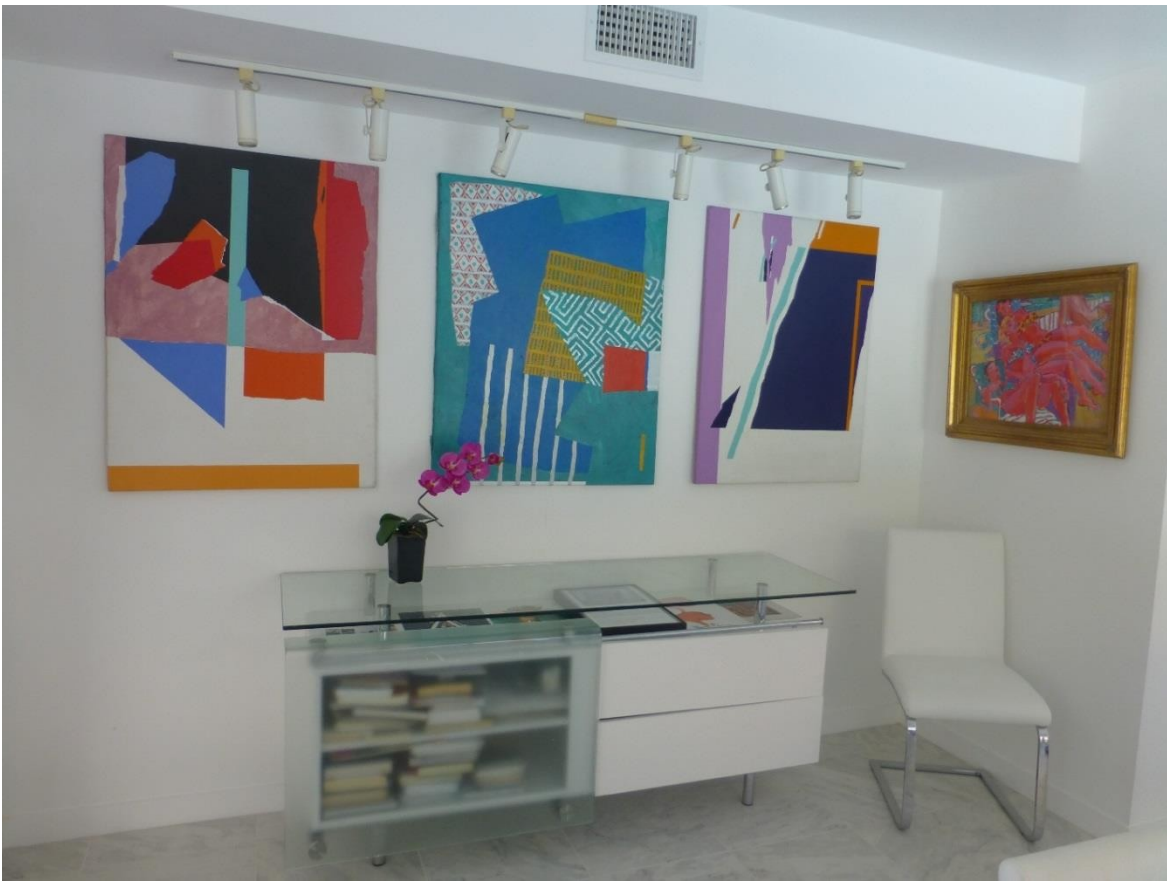


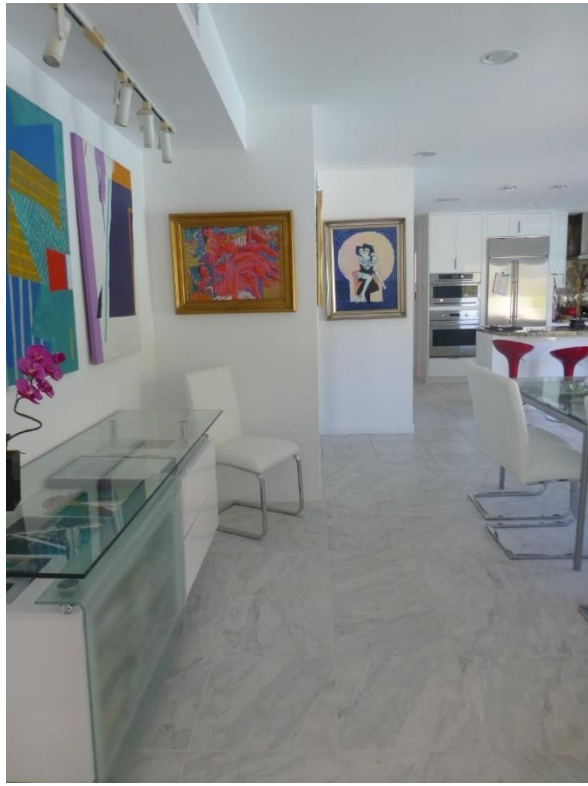




Femei pe o plaja la New Rochelle, langa New York, arzandu-se la sore ca omarii...







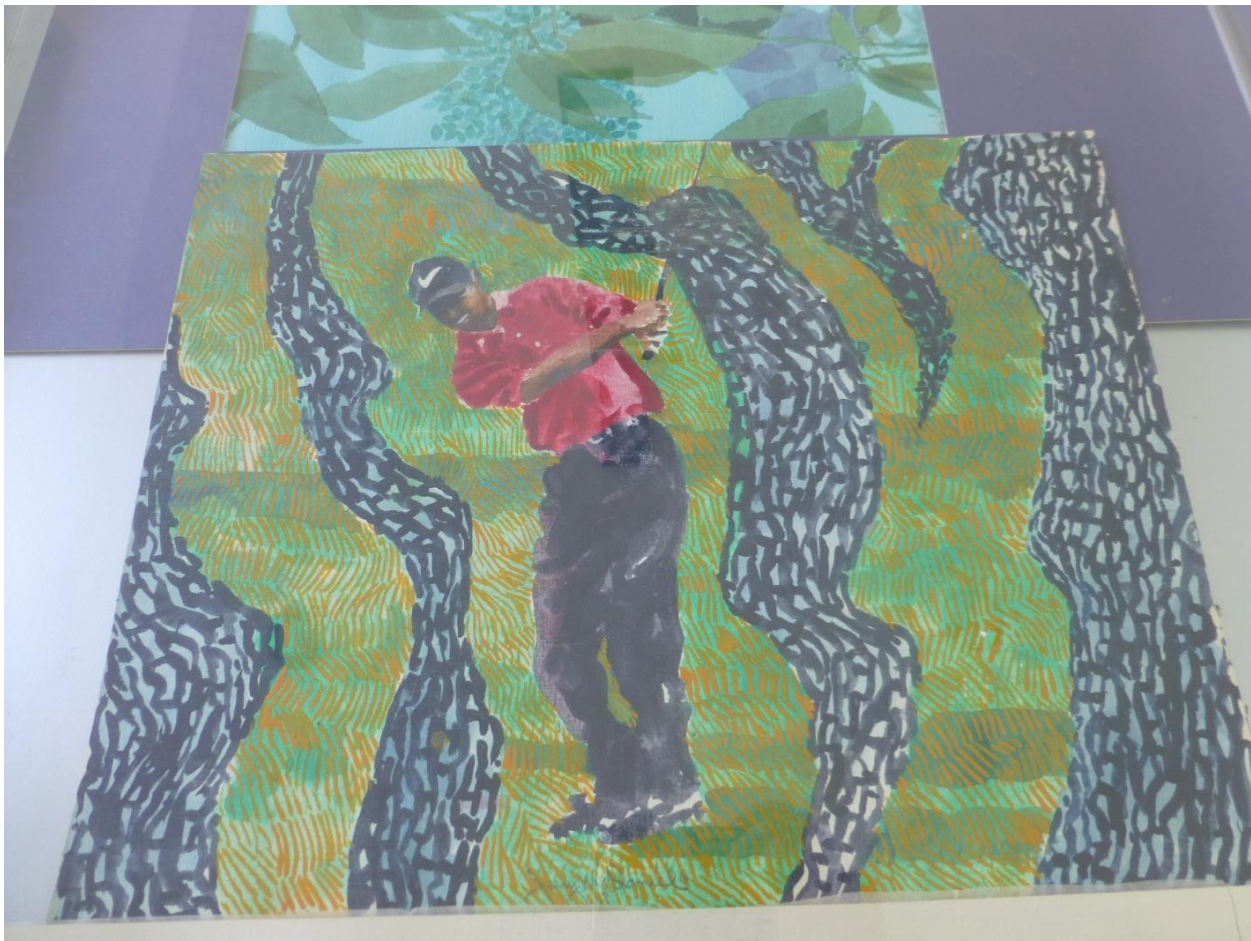




First Impressions



Glass dining table designed by us with “drawers” to put paintings which can be changed. Now a sports series.



Tiger

Woods ...











Posters from the paintings of Lucian Blaga's poems, created to form the background at the recital series of the artist from Bucharest Lidia Lazu, May 2008

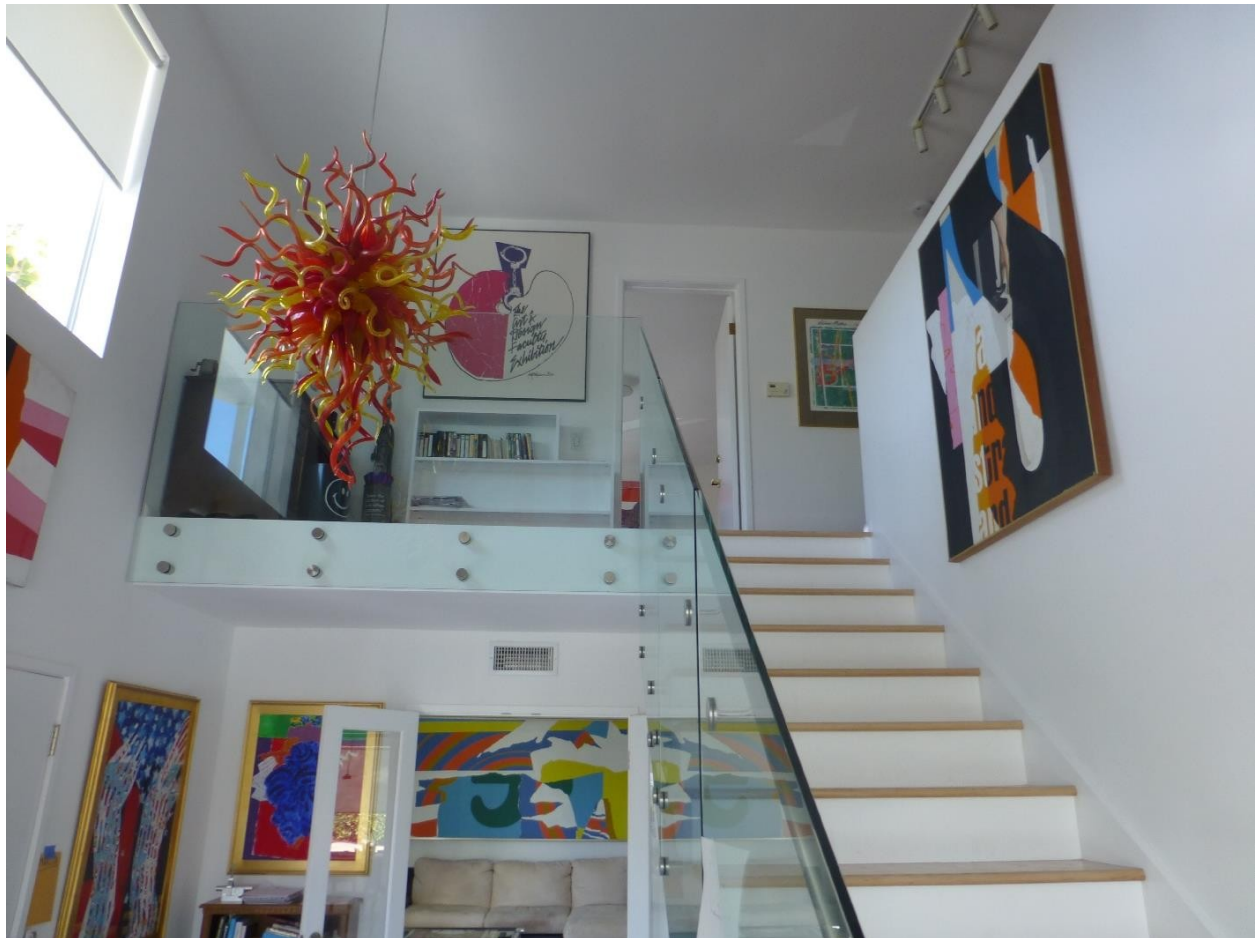


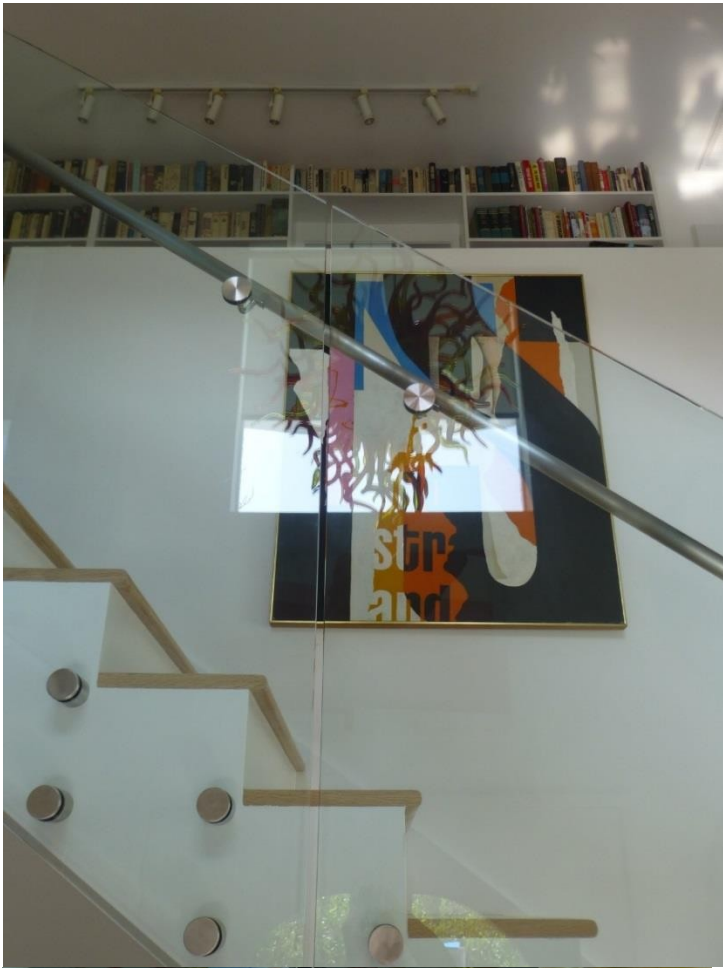
The enlarged (doubled in size) kitchen has an island; the granite is Brazilian called Mascarello.



Lower cabinets near the Scandivaian table (from Nic’s apartment in Chicago – about 50 years old)

The kitchen now is much closer to the pool. It is good since one sees less of the cement surface.







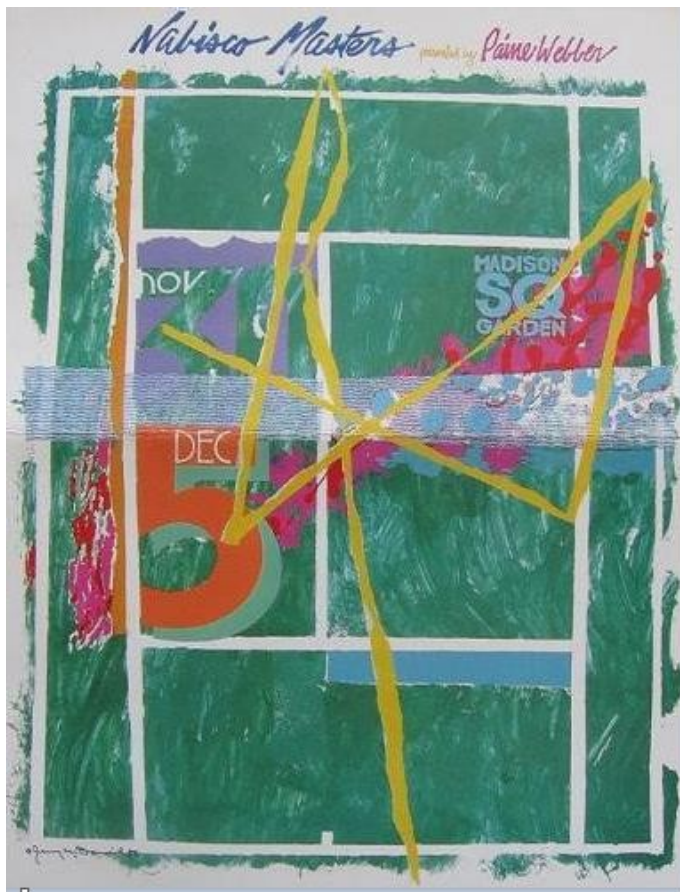
Mixed media (house paint and an add for man shoes) The painter was interested in the sexuality that went on between the man and the bare-footed woman in the add







Upstairs corridor towards the Master Bedroom; to the left the Poster for an Fashion Institute of Technology Faculty Exhibition poster; to the right the tennis poster "Nabisco Masters"



Our design of the carpet in the bedroom to repair a whole in the blue carpet left by the removal of a wall of the cabinet of the vertical air-conditioning system which was replaced by a horizontal one now in the attic



One of the "Eiffel Tower Everywhere" painting series









Additions: enlargement of the kitchen towards the pool and a 400 sq ft studio behind the garage

Jerry W. McDaniel's ART - Links

<http://www.family.noonoosh.com/Omnigraphies/Klein-Jerry-09-23-12/ArticleAncaJerry-KleinEnglish.html>

Jerry W. McDaniel Solo exhibition at Klein Art Academy, Beverly Hills, 2012

<http://www.jerrywmdanielstudios.com/VPAC/Brochure>

Jerry W. McDaniel Solo exhibition at Valley Performing Arts Center (VPAC), CSUN, 2013

Painter's official website: www.jerrywmdanielstudios.com

IC Art Gallery: www.ic-art-gallery.com

Jerry W. McDaniel on Wikipedia: https://en.wikipedia.org/wiki/Jerry_McDaniel

Jerry W. McDaniel on SAATCHI ART: <http://www.saatchiart.com/jerrywmdaniel>

